

# Seagrave Aerial Ladders

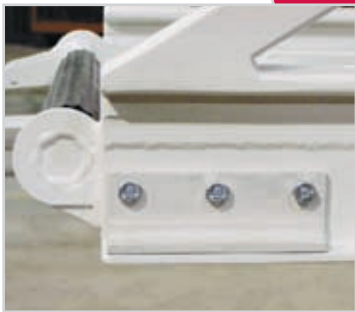
Higher performance when you need it most ...

Every aerial ladder is built and tested to stringent specifications right in the Seagrave plant. Each aerial built must pass a rigorous, comprehensive, third-party inspection before being released ... testing and verification that ensures your safety and Seagrave's high quality standards.

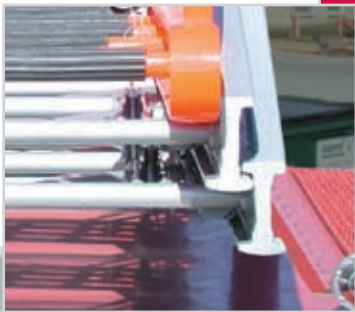
- All steel design maintains high strength at high temperatures — no accumulation of metal fatigue over extended heat exposure
- Totally greaseless ladder design offers ease in cleaning and maintenance after the toughest jobs
- Rubber rung covers are safety-grip design
- Telescoping waterway with duranodic protection against scuffing and corrosion
  - Nitroxil seals operate in -40°F to +250°F
- K-bracing provides optimum rigidity — even against shear winds



- I-Beam Steel Ladders — a Seagrave Exclusive**
- High strength-to-weight ratio
  - Painted exterior and seal-coated interior for optimum corrosion protection
  - Superior lateral rigidity for safe climbing
  - Concentrated strength zones absorb torsional stresses



- Greaseless Aerial Ladders**
- Replaceable, Teflon-impregnated wear strips — long lasting and easy to replace in the field
  - Bolt-on design requires no special tools or external lubrication



- Nested Ladder Design**
- Overlapped bearing surfaces nest together
  - Creates wider runways for easier climbing
  - Provides a lower and narrower profile for maximum visibility by tillerman while driving, and by operator while standing at control pedestal
  - Optional nesting profiles further enhance tiller cab visibility



- Planetary Drive Gearbox**
- Controlled deceleration eliminates "jolt" damage to aerial while ensuring personnel safety
  - Provides smooth, quiet motion with more finite control
  - Easy service access from top
  - Robust mechanical design for long service life
- Options**
- Removable ladder tip
  - One or two pairs of folding steps
  - Steel lifting eyes
  - Removable rung-mounted rope pulley
  - Pump systems
  - Bed pipe waterway
    - Three different styles
    - Several monitor options

**Seagrave Service**  
Seagrave Fire Apparatus are sold and serviced by a nationwide, factory-trained dealer organization that is readily available to assist with all your service and technical support needs for the total Seagrave product; including cabs, chassis, bodies, pumps, ladders and aerial components. In addition, these professionals can help with specifying all the many features and options on your new custom Seagrave. Your local Seagrave dealer can be identified on the Seagrave web site, or by calling us.

- Seagrave Financing**
- Choose any of several attractive prepay options that serve to lower acquisition cost
  - Seagrave can provide lease-purchase financing tailored to any Fire Department budget
  - Proposals are immediate and easily understood



## Tractor-Drawn Aerials

Made for a lifetime of use in the most demanding profession in public service.



Phone: 715-823-2141  
Fax: 715-823-5769  
Clintonville, WI  
www.seagrave.com

## Tractor-Drawn Aerials

Mid-mount Tractor-Drawn Aerials allow quick access to congested urban fire scenes



Achieve the highest level of performance, safety and maintenance efficiency with the uncompromising quality of Seagrave aerials.

- 250 lb or 500 lb Aerial Ladder Capacities
- Seagrave Custom Chassis and Stainless Steel Cab
- Stainless Steel Modular Body Designs





# Tractor-Drawn Aerials

## High-performance tractor-drawn aerials with your choice of wheelbase

When congested, narrow city streets and tight corners are between your station and your destination, choose a Seagrave tractor-drawn aerial. Your firefighters can maneuver this apparatus anywhere they can put the tractor.

The Seagrave Tractor-Drawn Aerial (TDA) is known for being safe, tough and dependable. It has excellent reach and extension above and below grade. It has one of the highest tip load and flow ratings in the industry — without compromising one for the other. It's a first class performer that simply has no match.

Seagrave is by far the largest manufacturer of tractor-drawns, with several cab and ladder options available. Each offers the same exceptional quality, single source service and warranty coverage that have helped make Seagrave the industry's aerial leader.

Seagrave's Tractor-Drawn Aerials are available only with the Marauder II chassis with stainless steel cab:

- Complete air-ride suspension system available to maximize ride and handling

Ladder Configurations:

- 100 ft 500 lb tip load ladder
- 100 ft 250 lb tip load ladder

Dedicated to superior quality since 1881



### Aerial Safety Systems

- Ladder Cradle Interlock System
- Rotation Interlock System
- Control enable foot switch
- Rung alignment light
- Overload alarm and light
- Emergency pump

### Electrical System Features

- Intelux multiplex or hardwire options
- Custom wire harness with weather proof connectors
- Wiring is color, number and function coded

## The Foundation of Ladder Stability

- 1 Turntable is structurally connected directly to the outriggers, providing optimum stability for aerial
- 2 Structural integrity of chassis and aerial are independent of each other
- 3 Jackknife configuration does not inhibit performance



### Two Outrigger Designs

- Either H-frame or A-frame available, tip load dependent
- Straight out-and-down H-frame when 250 lb. with a pinnable waterway
- Straight out-and-down H-frame angled forward when it's a 500 lb. ladder
- A-frame when 250 lb. without a waterway or with a bed pipe
- Easy leveling on slopes up to 5°
- Narrow profile with stacked design uses less space
- Outrigger spread is 12' 6" with A-frame or 16' 6" with H-frame



### Fast Deployment of Outriggers

- Single-lever controls for rapid set-up
- Short-jack capability combined with integrated interlocks to restrict unsafe ladder rotation
- Independent left and right side operation
- LED light clearly shows when outrigger jack is firmly on ground



### Tiller Cab Standards

- Open/close air vents
- 18" diameter steering wheel
- Tilt steering column
- Turn signal indicators
- Sun visor
- Dome light
- Jackknife position audible and visual warning system for driver and tiller operator
- Adjustable seat



### Stainless Steel Tiller Cab

- 36" wide by 54" high
- Tubular steel framework
- Aluminum treadplate floor
- Tinted front windshield (13" high x 29" wide)
- Sliding side doors with extra large upper optional side wall windows
- Diesel fueled heater with windshield and floor outlets
- Two side-mounted rear view mirrors
- Two-speed windshield wipers
- HVAC option: 14,000 btu
- Bubble-door window option
- Optional insulation package

### Tiller Cab Access

- Wide curbside ladder with swimming pool hand rail
- Additional street-side ladder available
- Aluminum construction with Gripstrut steps
- Inboard slant for easier access to tiller cab



### Safe and Spacious Turntable

- Two or three large guard rails for optimum safety
- 96" wide turntable platform
- Street and curbside access
- Full-service access pedestal control station



### Turntable Console

- Driver's side of turntable facing the ladder tip
- Hinged panels provide easy access for inspection and maintenance
- Illuminated for night operations
- Controls at your fingertips:
  - Elevation
  - Extension/retraction
  - Rotation
  - All nozzle controls
  - Load gauge (option)



### Maintenance

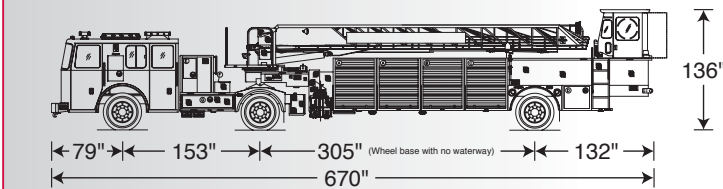
- Greaseless wear strips between ladder sections prevent dirt and debris from affecting performance. Smooth extension every time.
- After a call, ladder wash-up and maintenance are simplified
- Contact wear points are easily monitored and repaired in the field
- Bearing bolts are all accessible from the top for ease of torquing

Performance you can depend upon ...

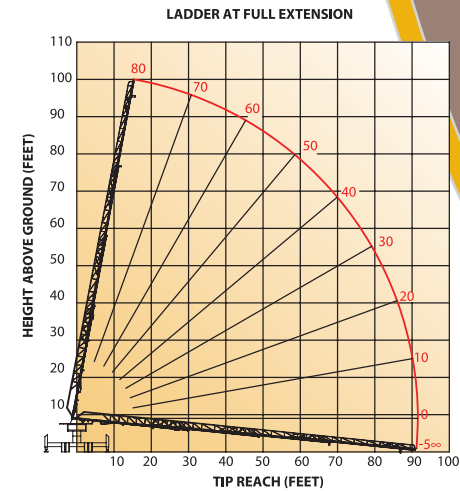
## 100' 500 lb Tip Load – 1,000 GPM

Elevation: -5° to 80°  
Reach: 91' @ 0° (horizontal)  
100' @ 80°

	Ladder Widths	Hand Rail Heights
Base:	31"	25"
Lower Mid:	28"	22"
Upper Mid:	24"	18"
Fly:	21"	15"



(Dimensions can vary based on final specifications)

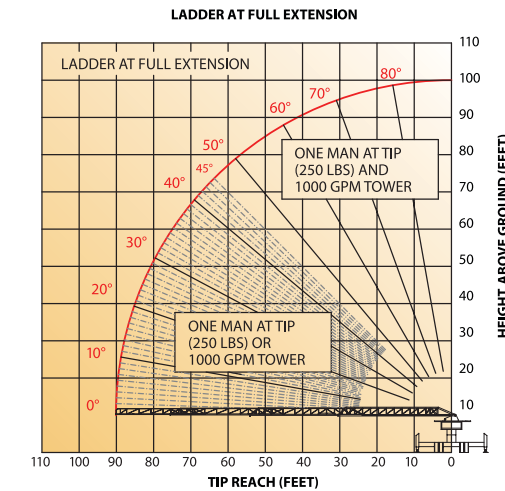
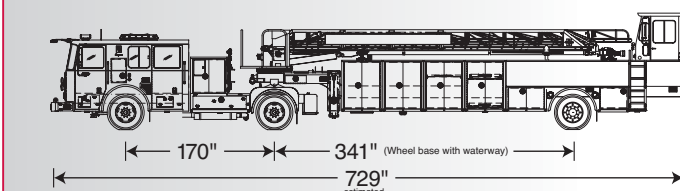


500 lb (two men) at tip while flowing 1,000 GPM of water at any extension, any angle

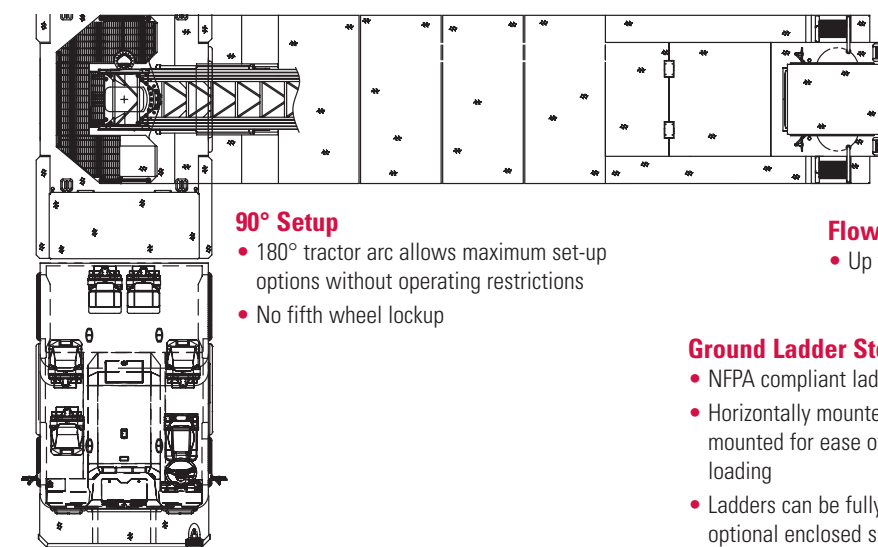
## 100' 250 lb Tip Load – 1,000 GPM

Elevation: -5° to 80°  
Reach: 91' @ 0° (horizontal)  
100' @ 80°

	Ladder Widths	Hand Rail Heights
Base:	31"	22"
Lower Mid:	28"	18"
Upper Mid:	24"	15"
Fly:	21"	12"



250 lb at tip while flowing 1,000 GPM of water at any extension; if under 45°, can support a single firefighter or spray water at any extension



### Ground Ladder Storage

- NFPA compliant ladder complements
- Horizontally mounted or vertically mounted for ease of removal and loading
- Ladders can be fully protected with optional enclosed side panels

