

Seagrave Aerial Ladders

Higher performance when you need it most ...

Every aerial ladder is built and tested to stringent specifications right in the Seagrave plant. Each aerial built must pass a rigorous, comprehensive, third-party inspection before being released ... testing and verification ensures your safety and Seagrave's high quality standards.

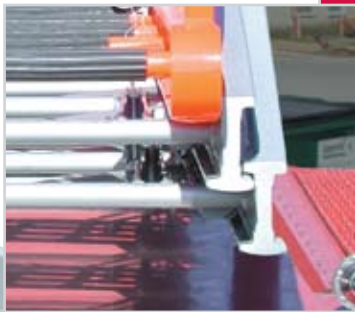
- All steel design maintains high strength at high temperatures — no accumulation of metal fatigue over extended heat exposure
- Totally greaseless ladder design offers ease in cleaning and maintenance after the toughest jobs
- Rubber rung covers are safety-grip design
- Telescoping waterway with duranodic protection against scuffing and corrosion
 - Nitroxil seals operate in -40°F to +250°F
- K-bracing provides optimum rigidity — even against shear winds
- 20-year structural warranty



- I-Beam Steel Ladders — a Seagrave Exclusive**
- High strength-to-weight ratio
 - Painted exterior and seal coated interior for optimum corrosion protection
 - Superior lateral rigidity for safe climbing
 - Concentrated strength zones absorb torsional stresses



- Greaseless Aerial Ladders**
- Replaceable, Teflon-impregnated wear strips — long lasting and easy to replace in the field
 - Bolt-on design requires no special tools or external lubrication



- Nested Ladder Design**
- Overlapped bearing surfaces nest together
 - Creates wider runways for easier climbing
 - Provides a lower and narrower profile for maximum visibility by operator while standing at control pedestal



- Planetary Drive Gearbox**
- Controlled deceleration eliminates "jolt" damage to aerial while ensuring personnel safety
 - Provides smooth, quiet motion with more finite control
 - Easy service access from top
 - Robust mechanical design for long service life

- Options**
- Removable ladder tip
 - Steel lifting eyes
 - Removable rung-mounted rope pulley
 - Several monitor options
 - Breathing air to tip
 - 120 volt AC to tip
 - LED rung lighting in color of choice

Rotation drive mounted under ladder allows maximum foot room on turntable.

Seagrave Service
Seagrave Fire Apparatus are sold and serviced by a nationwide, factory-trained dealer organization that is readily available to assist with all your service and technical support needs for the total Seagrave product; including cabs, chassis, bodies, pumps, ladders and aerial components. In addition, these professionals can help with specifying all the many features and options on your new custom Seagrave. Your local Seagrave dealer can be identified on the Seagrave web site, or by calling us.

Seagrave Financing

- Choose any of several attractive prepay options that serve to lower acquisition cost
- Seagrave can provide lease-purchase financing tailored to any Fire Department budget
- Proposals are immediate and easily understood



Meanstick



Phone: 715-823-2141
Fax: 715-823-5769
Clintonville, WI
www.seagrave.com

Meanstick

75' Aerial Ladder with Seagrave Marauder II Chassis



- 75' 500 lb Ladder
- 2000 gpm Pump
- 500 gallons Water
- 1000' 5" Hose Capacity
- Stainless Steel Cab
- 128' Ground Ladders
- 192" Wheel Base
- Seating For Six
- 30' 7" Turning Radius
- Stainless Steel Body



Meanstick

High-performance rear-mount quint 75' aerial ladder with Marauder II custom Seagrave chassis

The Seagrave Meanstick 75' aerial ladder is known for being one tough, dependable, and highly maneuverable unit. It has excellent reach and extension above and below grade. It has one of the highest tip load and flow ratings in the industry – without compromising one for the other. It is a first class performer that simply has no match.

- 500 lb. tip load
- Standard overall height 138" with 400 gallon water tank
- Wheelbase length and turning radius are comparable to a pumper
- Wheelbases starting at 192"
 - 192" wheelbase provides outstanding maneuverability and a turning radius of 30' 7"
- Cummins and Detroit Diesel Engine Offerings to 515 HP
- Stainless steel or aluminum body
- Stainless steel pump enclosure

The Meanstick is combined with the Seagrave Marauder II Chassis with Stainless Steel Cab.

Seagrave has built a reputation for durability, longevity, and dependable performance in the most demanding Fire Departments across the nation. The Marauder II Meanstick is the end product of all we have learned from demanding users who want only the best equipment available.



The Foundation of Ladder Stability

Both the aerial turntable and outriggers are attached directly to the torque box.

- Provides optimum stability for aerial
- Intercepts the aerial forces and isolates stress loads from the frame
- Keeps structural integrity of chassis and aerial independent



Rescue Ready

- Optional steel lifting eyes on base rail for rope rescue
- Optional detachable lifting device with single or double pulleys

Fly Section Options

- 4.5' removable tip
- Aerial creeper controls
- Halogen, strobe, LED, and many other lighting options
- Intercom systems (two- or three-station)
- 120-volt electrical options
- Breathing air outlet

Up to 170 cu. ft. of Body Compartment Storage

- 99" wide body contains 28" deep lower compartments
- Optional street-side full-depth compartments
- Hinged or roll-up doors
- Compartments for up to six SCBA bottles

Pre-piped Waterway with Pinnable Option

- Pinnable waterway option allows waterway to be attached to the fly or the second ladder section
- Remote control waterway nozzle



Below Grade Extension

- Full extension down to 5° below grade
- Excellent rigidity thanks to Seagrave steel I-beam ladder construction
- One set of outriggers

17' 4" Rear Outrigger Spread

- Pivoted foot provides full contact with uneven ground



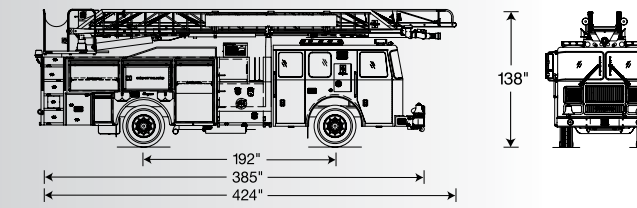
A Turntable with Room and Safety

- Rotation drive mounted under ladder allows maximum foot room on turntable
- 96" wide turntable platform
- Street and curbside accessible
- Three guard rails for optimum safety
- Full access pedestal
- Bearing bolts all accessible from top for ease of retorquing

Elevation: -5° to 80°
Reach: 66' @ 0° (horizontal)
75' @ 80°

Ladder Widths Hand Rail Heights

Base:	31"	22"
Mid:	28"	19"
Fly:	24"	15"



(Dimensions may vary based on final specifications)

Controls at Your Fingertips

- Overload alarm and light
- Elevation
- Extension/retraction
- Rotation
- All nozzle controls



Independent Outrigger Control

- Dual-function joystick allows out and down deployment of outrigger in one step
- Allows deployment on each side in full view of operator
- Load-light clearly shows when outrigger jack is firmly on ground



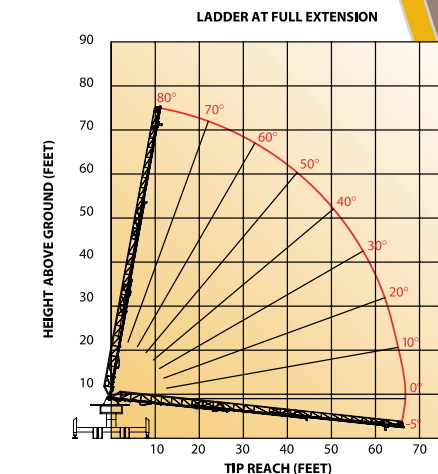
Low Maintenance

- Greaseless wear strips between ladder sections prevent dirt and debris from affecting performance. Smooth extension every time.
- After a call, ladder wash-up and maintenance are simplified
- Contact wear points are easily monitored and repaired in the field
- Bearing bolts are all accessible from the top for ease of torquing



Performance

500 lb Tip Load – 1,000 GPM



500 lbs (two men) at tip while flowing 1,000 GPM of water at any extension, any angle.



Ergonomics, Control and Safety

- Ergonomic crosslay – just 66" high off ground
- Pull-out step provides a large, safe operators stand
- Waterous, Seagrave, and Hale pumps available
- Foam or CAFS systems available



Optional Aerial Controls at Pump Panel

- Ideal for operating aerial device while monitoring the pump panel
- Solid state electronics provide precise control
- Optional nozzle controls and intercom on pump panel

Concealed Jack Pad Storage

- Jack pads secured to inside wall of outrigger chamber – always clean and ready to use



Equipment shown may include options

Convenient Ground Ladder Access

- Up to 135' of ground ladders
- Vertical ladder storage just 57" above ground
- Removable center panel for easy access to swivel, rotation drive, and aerial waterway piping

Spacious Hose Beds

- Holds 1,000' of 5" hose total
- Large 14" x 8" chutes